

1B. RENFREW COUNTY COMMON CONCURRENT DISORDER (CD) CLIENT PROCESS MAP – DESIRED FUTURE STATE

DRAFT v.07

Addictions & Mental Health
(DESIRED FUTURE STATE)

sign one multi-agency consent form (not multiple)

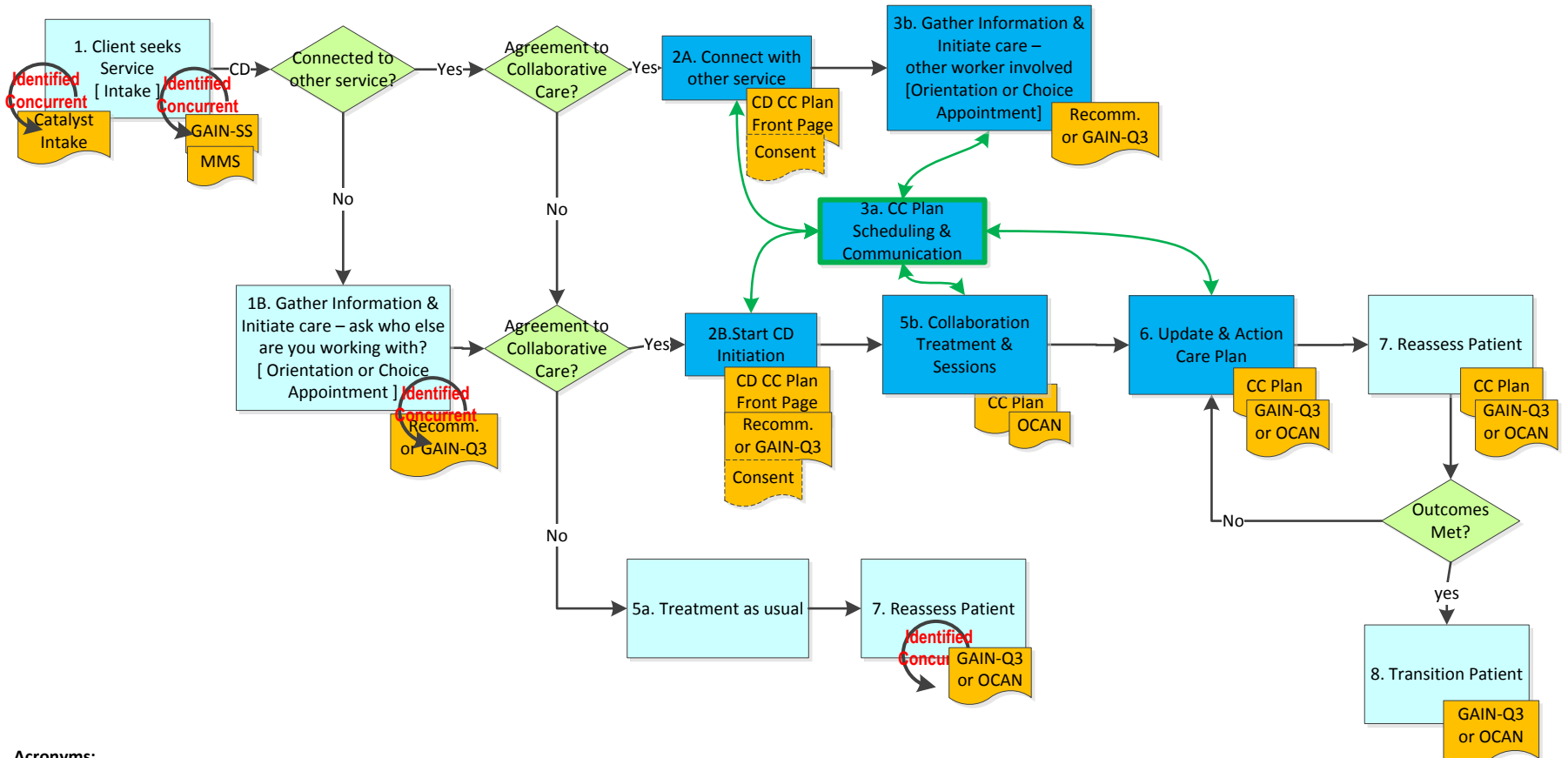
The sooner the collaborative care starts the better

Do not want to start from ground zero, ideally pick up and share information/assessments that have been done

If you can only do one collaborative meeting, it should be the meeting developing the care plan

CD Client Criteria

- GAIN-SS; 3+ iDScr, 3+ SDSScr
- MMS: 10+
- Already connected/using MH/A service



Acronyms:

- | | | | |
|---------|---|---------|-------------------------------------|
| Add. | - Addictions | C.D. | - Concurrent Disorder |
| GAIN-Q3 | - Global Appraisal of Individual Needs Q3 | MMS | - Modified Mini Screener |
| GAIN-SS | - Global Appraisal of Individual Needs Short Screener | OCAN | - Ontario Common Assessment of Need |
| IDScr | - Internalizing Disorder Screener | Recomm. | - Recommendations |
| MHS | - Mental Health Services | SDScr | - Substance Disorder Screener |
| CCPlan | - Collaborative Care Plan | | |

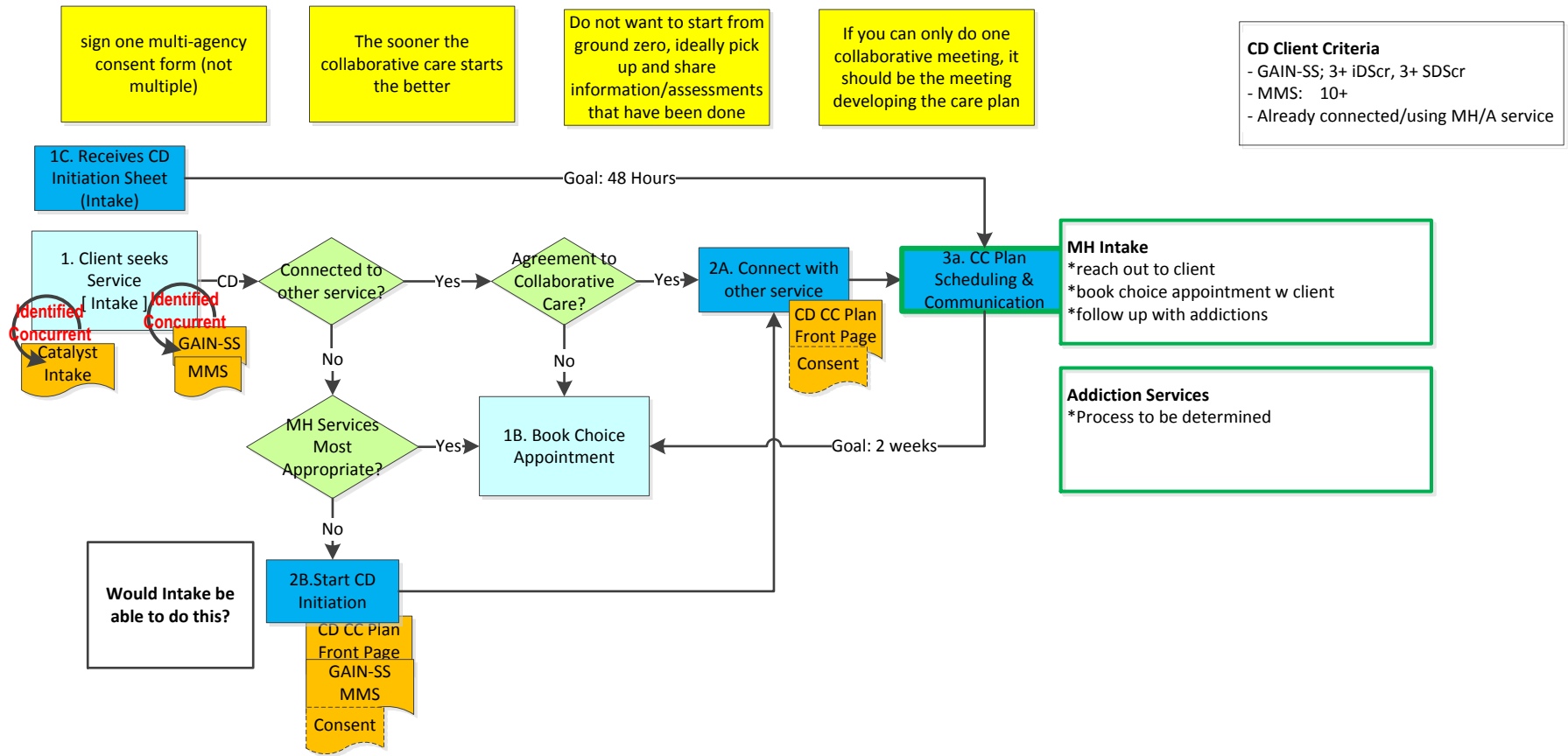
Legend

	Process Step		Decision point
	New process/step		Communication Flow
	Assessment / Other Tool		Client Experience

1B. RENFREW COUNTY COMMON CONCURRENT DISORDER (CD) CLIENT PROCESS MAP – DESIRED FUTURE STATE – Intake Process

DRAFT v.07

Addictions & Mental Health
(DESIRED FUTURE STATE)



Acronyms:

- | | | | |
|---------|---|---------|-------------------------------------|
| Add. | - Addictions | C.D. | - Concurrent Disorder |
| GAIN-Q3 | - Global Appraisal of Individual Needs Q3 | MMS | - Modified Mini Screener |
| GAIN-SS | - Global Appraisal of Individual Needs Short Screener | OCAN | - Ontario Common Assessment of Need |
| IDScr | - Internalizing Disorder Screener | Recomm. | - Recommendations |
| MHS | - Mental Health Services | SDScr | - Substance Disorder Screener |
| CCPlan | - Collaborative Care Plan | | |

